

## Our 2012 Goals

- Complete Phase 1 exploration program for Picha Project
- Establish drill targets for Phase 2 drill program at Picha Project
- Develop and expand strategic partnership with Lara Exploration
- Actively pursue South American base and precious metal acquisitions



TSX-V: **NET**

### Management & Board of Directors

**Alexander Helmel, BSc**  
CEO, President and Director since 2006

**Moise Uribes, BSc**  
CFO since 2011

**Richard Schnoor**  
Director of International Operations and Director since 2006

**Ken Thorsen, BSc**  
Senior Geological Advisor and Director since 2008

**Robert Friesen, P.Geo**  
Senior Mining Advisor and Director since 2008

### Geological Discovery Team

#### Marco Fernandez-Concha, Senior Geologist

- 25+ years of exploration & geological experience in South America
- Former South American Exploration Manager for Noranda
- Former GM responsible for Latin America with Teck Exploration

#### Ken Thorsen, Senior Geological Advisor

- 40+ years of exploration experience
- Former President of Teck Exploration
- Key projects: Estrades (Quebec), South Bay (Ontario), Leinster (Australia)

#### Robert Friesen, Senior Mining Advisor

- 40+ years experience in underground & open pit mining operations
- Former exploration geologist with Teck Exploration and Noranda
- Key projects: Pogo (Alaska), Geko (Ontario), Samatsum (BC)

#### Andre Gauthier, Lara Exploration, Senior Geologist

- 30+ years experience— focused on South America
- Headed Cambior's operations in Peru for 9 years
- Participated in La Arena gold discovery

### CORPORATE PROFILE

Network Exploration Ltd. is an aggressive mineral exploration company targeting large scale base and precious metal properties in North and South America. Network is publicly traded on the Toronto Venture Exchange under the ticker symbol "NET".

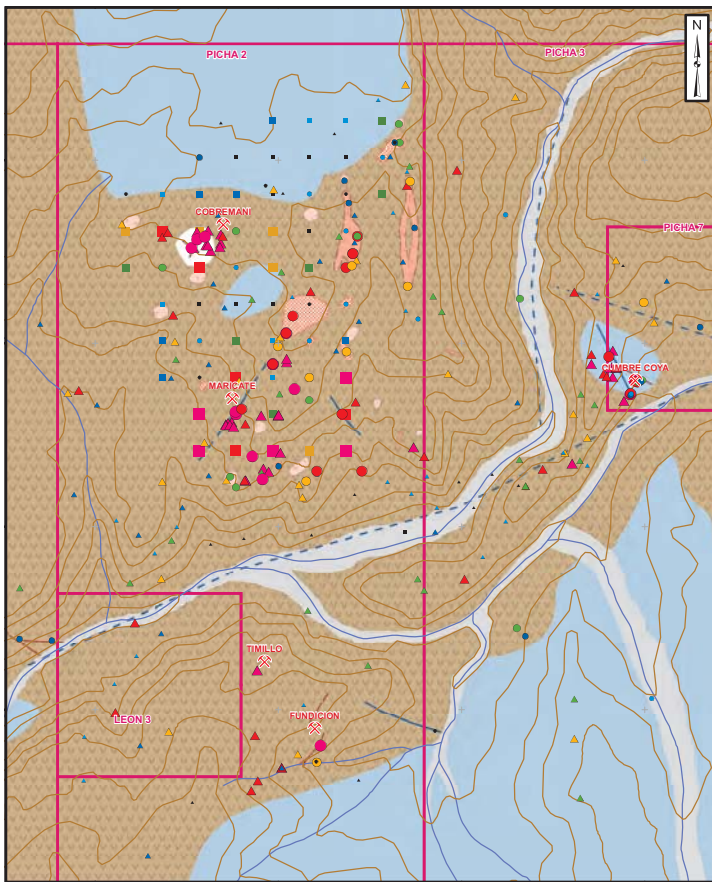
Network has interest in two Peruvian properties (Picha and Pistala) and intends to focus this year's exploration efforts on the Picha Property recently optioned from Lara Exploration (TSX.V – LRA).

### WHY INVEST?

The Company's focus is Peru, where the mineral rich Andes Mountains provide an abundance of economically minable copper and gold deposits to several of the world's largest mining corporations. As many of these deposits have yet to be discovered, the welcoming political and economic conditions, solid mining infrastructure, and cost effective operating environment provide an excellent opportunity for successful development and exploration.

- World's 2nd largest Silver producer
- World's 6th largest Gold producer
- One of the fastest growing economies in Latin America
- Mining friendly
- Politically stable
- Skilled mining workforce





## NETWORK EXPLORATION

**Exchange:** TSX Venture Exchange

**Trading Symbol:** NET

**Issued & Outstanding**

52,373,980

**Warrants**

24,051,500

**Options**

1,800,000

**Fully Diluted**

78,225,480

## ABOUT PICHA

The 6,000 hectare Picha copper-silver project is located within the tertiary volcanic arc of southern Peru, host to various epithermal gold-silver and copper porphyry-skarn deposits and targets of many majors and junior exploration companies. Picha is approximately 122km from Arequipa and approximately 12km NE of Goldfield's 7.5M oz Au/Ag Chucapaca deposit.

Preliminary exploration work at the Picha project found widespread alteration, brecciation and vein stockworking indicative of the presence of a porphyry system nearby. Recent geochemistry programs covering over 50 square km have outlined seven zones with anomalous copper and associated silver values, several of which have been mined on a small scale in the past from adits, shafts, and small pits.

Induced polarization and magnetic surveys have outlined six chargeability anomalies, indicative of sulphide mineralization in a wider area of moderate chargeability and higher magnetic response interpreted as volcanic or intrusive rocks.

Results of the 495 (rock, soil, or silt) samples assayed values of up to 12% Cu with 24% of the samples assaying over 0.5% Cu.

### The two main zones of initial interest are:

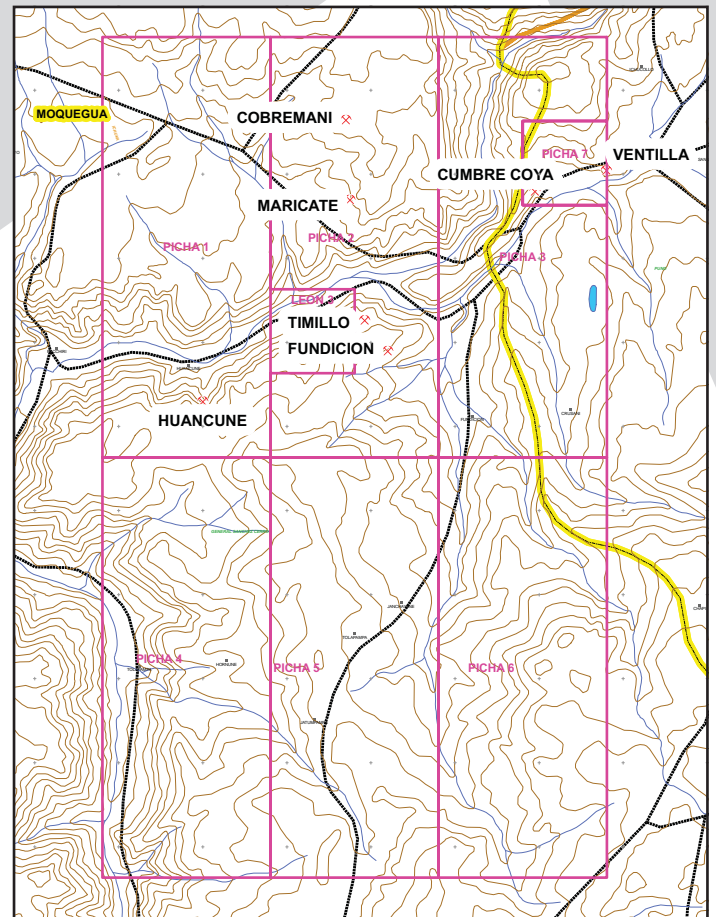
Cobremani

- 2.64% Cu, 16g/t Ag over 3.5m
- 12.0% Cu, 75g/t Ag over 3.5m

Maricate

- 2.14% Cu, 43g/t Ag over 5.0m
- 2.13% Cu, 47g/t Ag over 5.0m
- Up to 5% Zn and 18% Pb in other mineralized zones within the property.

**To date the property has never been drill tested.**



### Disclaimer

Network Exploration, ("NET") has taken all reasonable care in producing and publishing information contained on this factsheet and will endeavour to review and update the content in a timely manner. Material on this factsheet may still contain technical or other inaccuracies, omissions, or typographical errors, for which NET assumes no responsibility. NET does not warrant or make any representations regarding the use, validity, accuracy, completeness or reliability of any claims, statements or information on this factsheet. The information on this factsheet is not a substitute for independent professional advice before making any investment decisions. Furthermore, you may not modify or reproduce in any form, electronic or otherwise, any information on this factsheet, except for personal use unless you have obtained our express written permission. The TSX Venture Exchange has not reviewed the information on this factsheet and does not accept responsibility for the adequacy or accuracy of it. This factsheet contains forward-looking statements, including but not limited to comments regarding predictions and projections. Forward-looking statements address future events and conditions and therefore involve inherent risks and uncertainties. Actual results may differ materially from those currently anticipated in such statements.